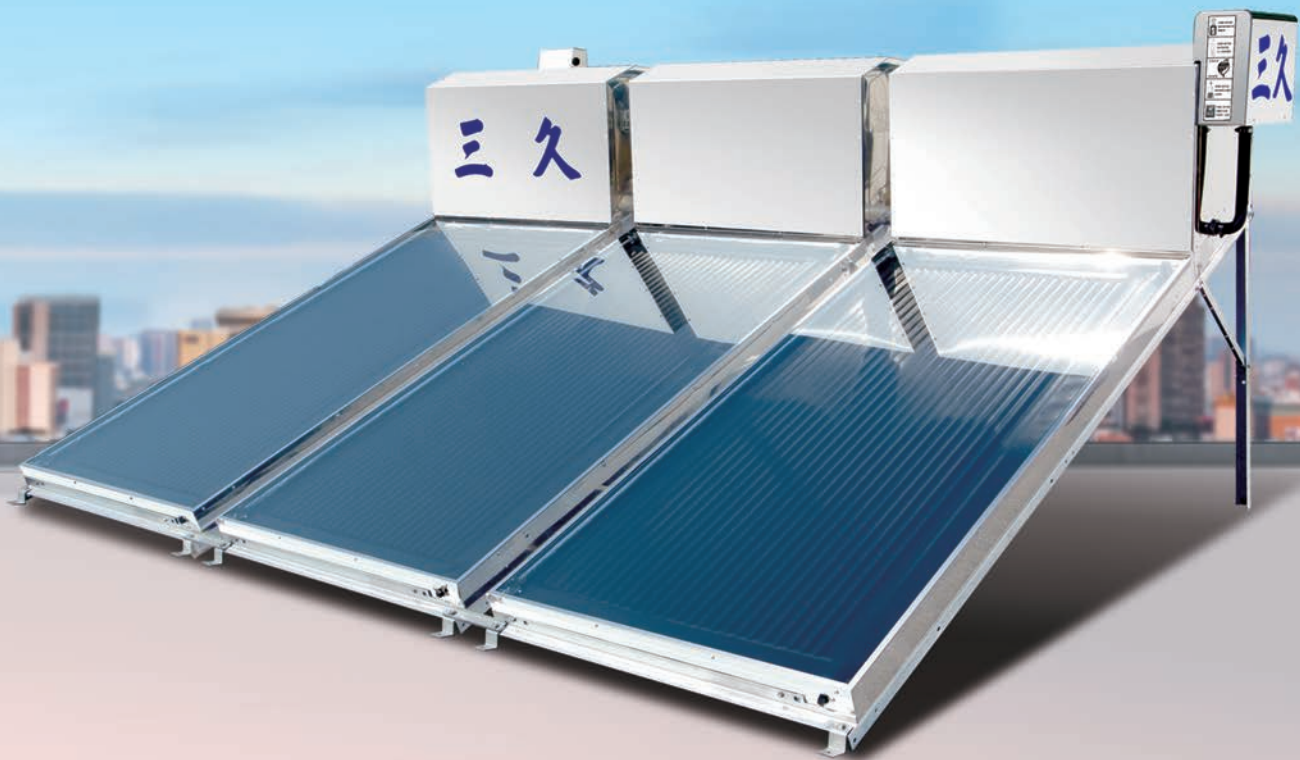


# SUNCUE® SOLAR WATER HEATER

Save Money, Durable, Safe, Convenient and Eco-friendly.



## The Most Awarded · The Best Selling



Invention and Creation  
Awards of Taiwan-  
Contribution Award



NATIONAL  
INVENTOR'S  
AWARD OF  
TAIWAN

Invention and Creation  
Awards of Taiwan-  
Contribution Award



TAIWAN  
EXCELLENCE  
2013

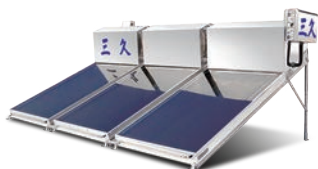


Green Mark



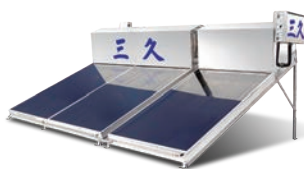
The National  
Gold Award  
for Architecture

## Flexibility in capacity for various requirement.



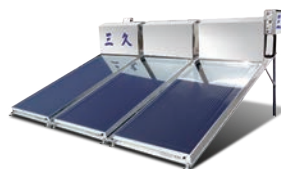
### TOP-384

Water tank:  
128×3=384 liters  
For 5-7 people



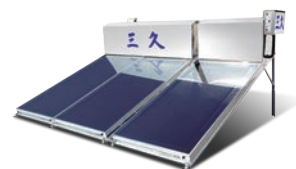
### TOP-406

Water tank:  
278+128=406 liters  
For 6-8 people



### TOP-504

Water tank:  
168×3=504 liters  
For 8-10 people



### TOP-516

Water tank:  
348+168=516 liters  
For 8-10 people



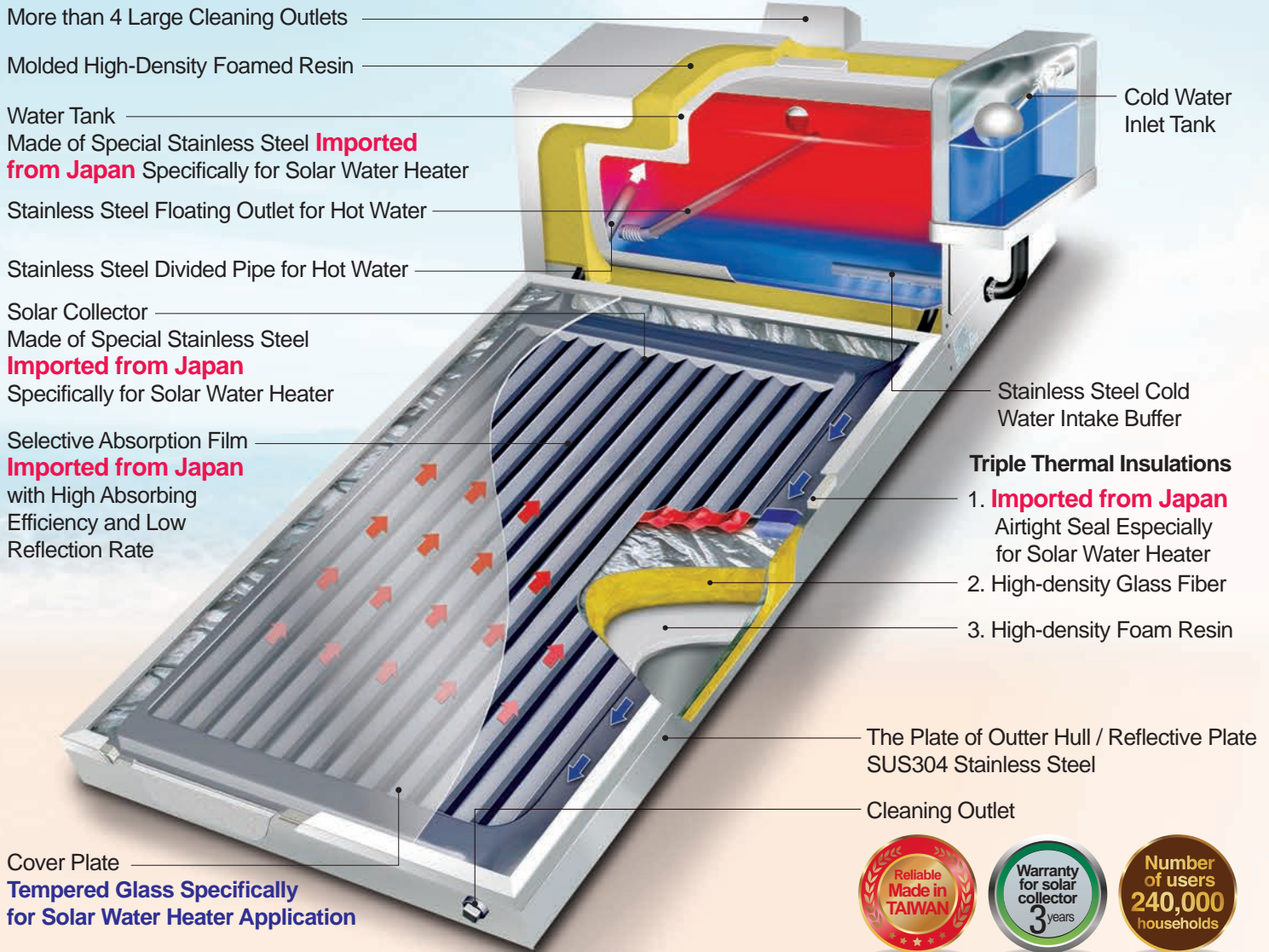
# SUNCUE® Solar Water Heater

Using technology from Japan, SUNCUE launched solar water heaters in 1980.

In 1993, SUNCUE exclusively developed stand-alone-tank design with great heat collecting performance, outstanding thermal insulation design and high hot water usage efficiency. It is now the leading brand made in Taiwan.

Source: NCKU Research and Development Foundation

## Synchronized with Japan Manufacturer in Both Materials and Design

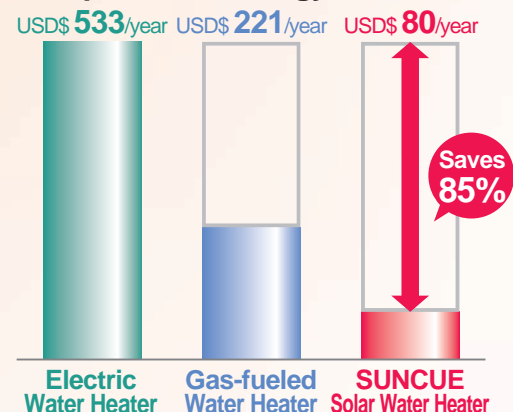


## Using SUNCUE Solar Water Heater Saves The Most Money. 85% of Energy Saving Annually.

Item	Electric Water Heater	Gas-fueled Water Heater	SUNCUE Solar Water Heater
Installation Fee Approx.	USD\$ 587	USD\$ 340	USD\$ 1,853~2,470
Actual Durability Approx.	7~10 years	5 years	More than 20 years
Use of Fuel No. of Days	365 days	365 days	55 days, average in Taiwan
Fuel Usage Units/year	5,694 Kwh	613 Units	858 Kwh
Fuel Cost USD\$/unit	0.1	0.36	0.1
Annual Fuel Cost	USD\$ 533	USD\$ 221	USD\$ 80
Total Fuel Cost Over Ten Years	Equals to the waste of three solar water heaters	Equals to the waste of one solar water heaters	Save money, Durable, Safe, Convenient and Eco-friendly.

• The calculation is based on the electricity cost on October 16<sup>th</sup>, 2024, natural gas cost on March 1<sup>st</sup>, 2025, water use of 300 liters per household for 365 days per year in Taiwan. • The numbers are for reference only due to variables in usage, fuel cost and CPI.  
• The USD value shown on the above chart is based on the exchange rate, TWD\$32.52 to USD\$1, at Bank of Taiwan as of October 24<sup>th</sup>, 2022.

### Comparison of Energy Cost Approx.



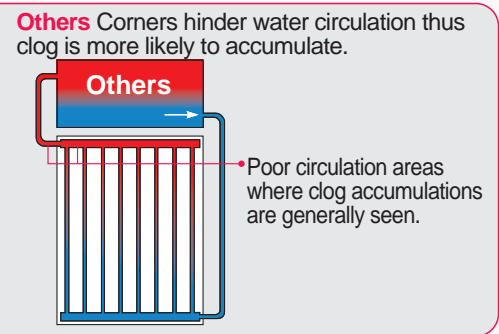
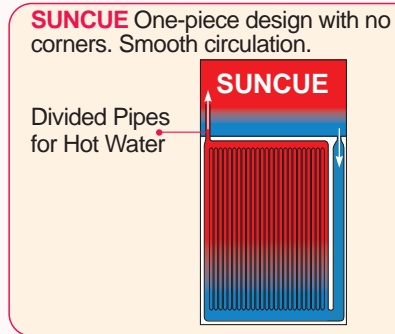
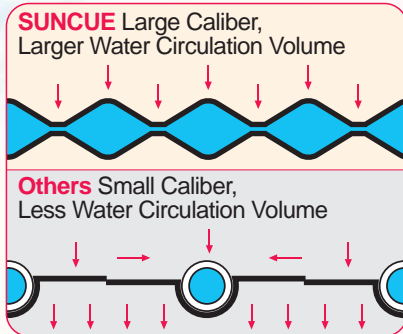


## Great Heat Collecting Performance

### Exclusively Using “Stainless Steel Solar Collector” from Japan

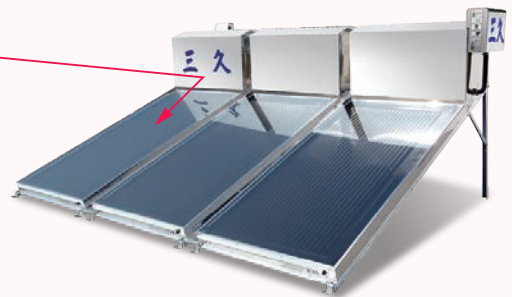
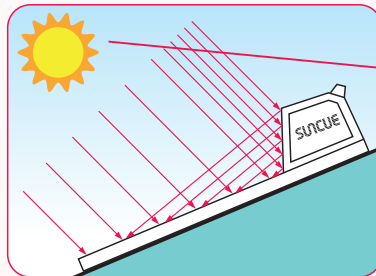
- Corrosion-resistant, highly clog-resistant, good heat collecting performance.
- 26 diamond-shaped water collecting tunnels create a water volume 2.5 times more than regular-tube type, thus heat collection is faster and efficiency is higher.
- The only manufacturer in Taiwan that produces high-efficiency plate type solar collector. The solar collectors directly heat up cold water inside water collecting tunnels by absorbing solar heat and provide the shortest and fastest route for heat transmission with the best solar heat collecting performance.

### Comparison of Heat Transmission



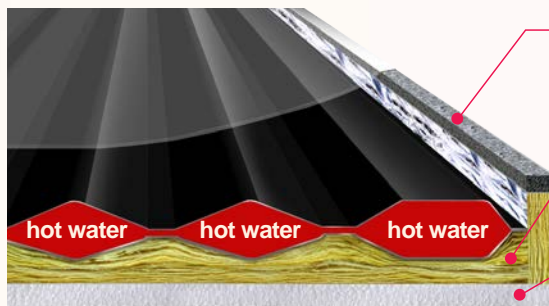
### Synchronized with Japanese brands, SUNCUE uses Large-area Reflective Plates

Collect more sunlight and enhance heat collecting efficiency by angled sunlight reflecting to the plates.



## Outstanding Thermal Insulation Design

### SUNCUE Exclusively Uses Triple Thermal Insulation Design to Provide Good Airproof and Insulation Performance.



**1st Insulation** Airtight Seal Especially for Solar Water Heater  
Weather-resistance / water-proof / finely sealed. Prevents moisture from entering solar collectors and cause dew to form.

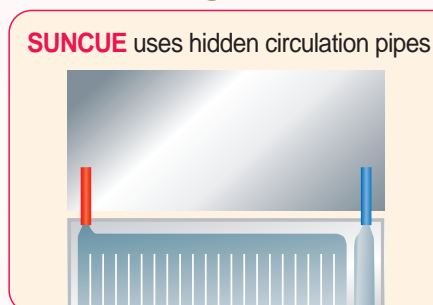
**2nd Insulation** High-density Glass Fiber  
Greatly minimizes heat loss with strong insulation and is non-flammable, corrosion-resistant, moisture-resistant, fungus-free and aging-free.

**3rd Insulation** High-density Foamed Resin  
Compact arrangement of molecules, good thermal insulation, even foam matrix, consistently good quality.

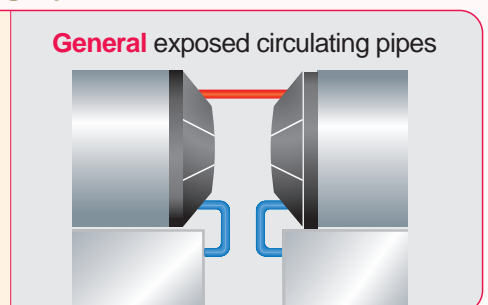
### One-piece Design

- Aesthetic appearance based on industrial design makes your living environment more stylish.
- Designed by structural engineers, SUNCUE solar water heater can endure typhoons and earthquakes.

### Vertical Design, Fast and Highly Efficient Circulation



Hidden circulation pipes reduce heat loss significantly.



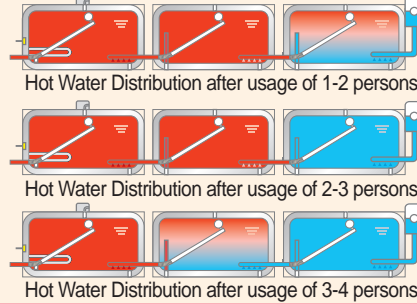
Exposed pipes allow more heat to escape. Structured with curved pipes causes poor circulation and clog.

# High Hot Water Usage Efficiency

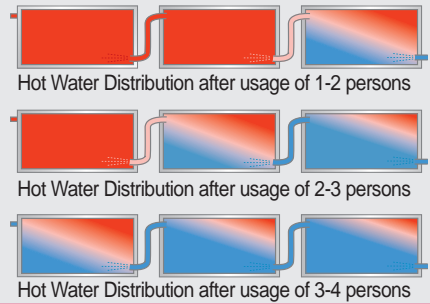
## Innovative Design of Stand-alone Tank

- Independent usage of hot water: hot water and cold water are separated. Hot water usage rate is about 90%.
- One-plate-one-tank design makes expansion convenient and economic in the event of increased hot water requirement and number of users

### SUNCUE's High Efficiency of Hot Water Usage Rate: About 90%



### Others' Efficiency of Hot Water Usage Rate: Only 70%



## Patented Design for Cold Water In and Hot Water Out

**Floating Outlet for Hot Water** Patented floating device ensures the hottest water is always taken from the top of the water storage tank.

**Divided Pipe for Hot Water** Speed up the flow of hot and cold water inside the collectors and improve the efficiency.

**Cold Water Inlet Buffer** Controlling cold water to flow gently to the bottom of water storage tank thus preventing cold water from mixing with hot water vigorously.

## Exclusively using Open-air Design

In open-air design, hot water in the water storage tank can still be fully used even during power failure or when water supply is cut off. However, in close-air type, hot water is pushed out by cold water intake.

# Save Money, Safe, and Convenient

## Electrical Auto Auxiliary Heating Device

The back-up heater only needs to heat up one water storage tank if water temperature is lower than set temp value. The heater monitors water temperature during set time slot and automatically heats up water till set temperature is reached. Save power, heat quickly and there is no need to wait for hot water.

## 8 Safety Devices

- |   |   |
|---|---|
| ① Anti-explosion Water Storage Tank                       | ⑤ Breaker for Electricity Leakage               |
| ② Temperature Controller                                  | ⑥ Time Controller                               |
| ③ Breaker for Preventing Heating Empty Water Storage Tank | ⑦ No Fuse Breaker                               |
| ④ Breaker that prevents overheating                       | ⑧ Paint-coated Stainless Steel Control Box Case |

### Main Control Box of Electrical Auto Auxiliary Heating Device outdoors

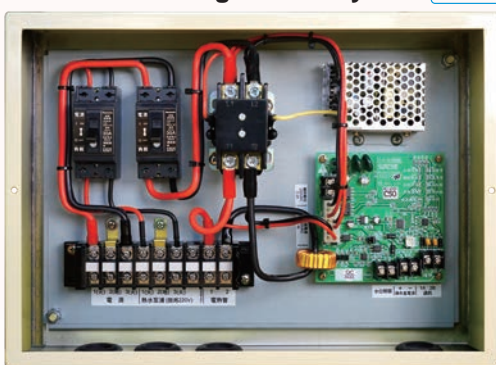


## Micro-computerized Auto Auxiliary Heating Device

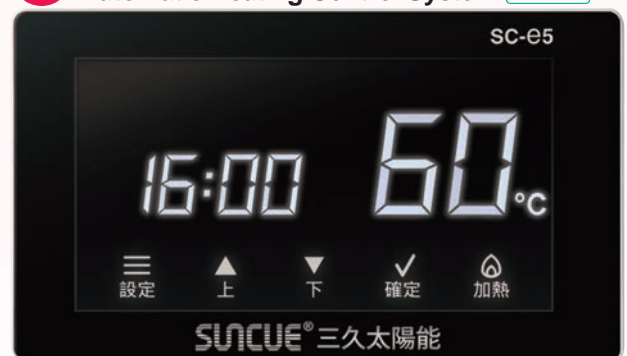
- Real-time Water Temperature Display**  
Monitor the exact temperature of your hot water in real time, allowing you to enjoy the energy-saving benefits of free solar energy with ease.
- Five-Segment Heating Schedule**  
Customize your heating schedule by setting different heating temperatures for each segment to meet your varying needs.
- Instant Heating**  
Activate instant heating with the push of a button to satisfy your temporary hot water demands.
- Abnormal Signal Display**  
Receive timely notifications of any system abnormalities, eliminating concerns about hot water availability.

The main control box can be controlled by multiple operation boxes - suitable for operating on different floors.

### Main Control Box of Micro-computerized Automatic Heating Control System outdoors



### New Deluxe Operation Box of Micro-computerized Automatic Heating Control System indoors



For tutorial video of using the micro-computer please visit <https://reurl.cc/IQ64VQ>



## Specification

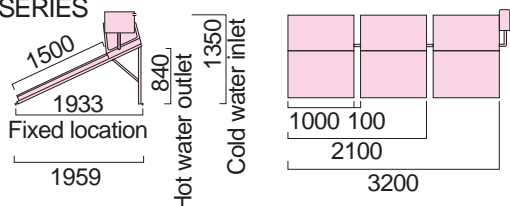
Item		Series	TOP-128	TOP-278	TOP-168	TOP-348
Solar Collector		pcs	1	2	1	2
Water Storage Tank		liter	128	278	168	348
Recommended Usage		persons	1-2	3-5	1-3	5-7
Collector Surface Area		m²/pc	1.43		1.91	
Collector Size		W×L mm	1,000×1,500		1,000×2,000	
Materials & Unique Features	Collector	Special stainless steel <b>imported from Japan</b>				
	Heat Retaining Tank					
	Solar Collector Absorption Film	Selective absorption film <b>imported from Japan</b> with high absorbing efficiency and low reflection rate				
	Insulation Material	Airtight seal specifically for solar water heater, molded high-density foamed resin and glass fiber; all <b>imported from Japan</b>				
	Cover Plate	<b>Tempered glass specifically for solar water heater</b>				
	The Plate of Outer Hull & Reflective Plate	Non-magnetic SUS304 stainless steel				
	Internal Circulation Pipes	<b>Little heat loss, not exposed to sunlight, strong with long life span</b>				
	Auxiliary Electric Heating	Electrical auto auxiliary heating device ensures hot water everyday				
Stand		HDG angle steel structure				
Weight Approx. kg Including water storage tank, solar collector, water inlet tank and stand.	Empty	76.7	150	91.7	173	
	Full	205	428	260	521	
Circulation Method		Natural circulation (hot water ascends and cold water descends naturally)				

- The electrical or micro-computer control box for electrical auto auxiliary heating device is optional.
- For region with poor water quality, please consult with your local distributors or contact us.
- While ambient temperature down to zero or liquid water freeze, the pipes inside the Products will be exploded by thermal expansion and contraction of three-phase change of water. Customers must blow down all liquid water inside the pipes of the Products before ambient temperature change hugely.

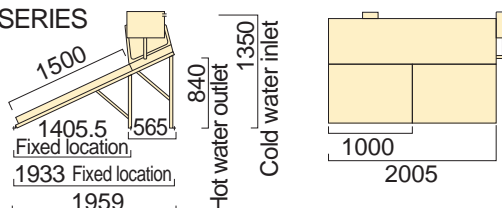
## Dimension

Unit mm

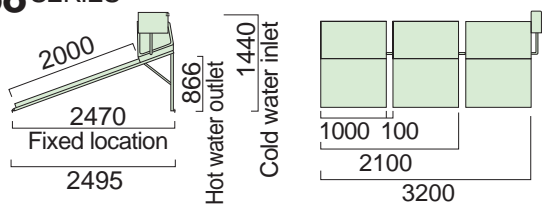
### TOP-128 SERIES



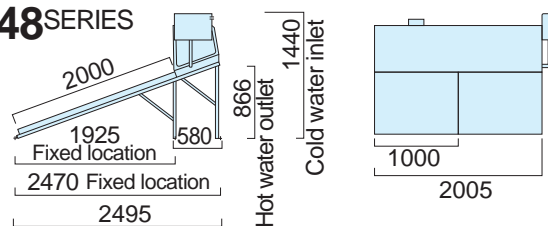
### TOP-278 SERIES



### TOP-168 SERIES



### TOP-348 SERIES



## Make a Choice

Please call us for the expertise of SUNCUE.

### Step 1: Decide the number of users

**1-5 people**  
Small family

**6-10 people**  
Big family

**More people**  
Preheating for a boiler, hotel, dormitory, hospital, large kitchen, business or organization

### Step 2: Decide hot water usage

**For bathroom**  
**Bathroom**  
About 50 liters per person each day

**Bathtub**  
About 120 liters per person each day

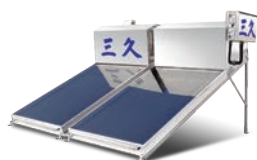
**Other bathtub**  
To be measured by a professional

**For bathroom + For kitchen**  
To be measured by a professional

### Step 3: Check pattern of water usage

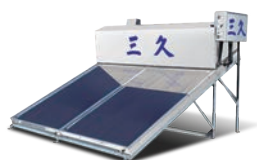
**Many low uses over the day.**  
Stand-alone tank models

**Heavy use in a short time**  
High-capacity models



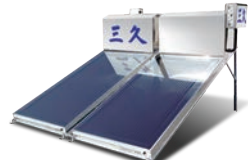
### TOP-256

Water tank:  
128×2=256 liters  
For 3-4 people



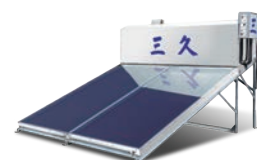
### TOP-278

Water tank:  
278 liters  
For 3-5 people



### TOP-336

Water tank:  
168×2=336 liters  
For 4-7 people



### TOP-348

Water tank:  
348 liters  
For 5-7 people

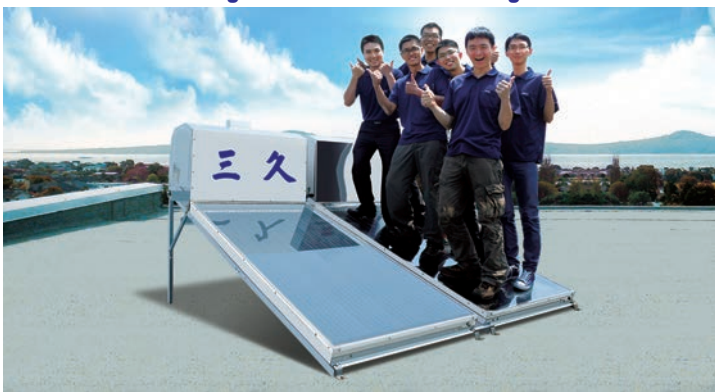




**SUNCUE's Quality Endures Typhoons and Taiwan 921 Earthquake. Strong and Durable!**



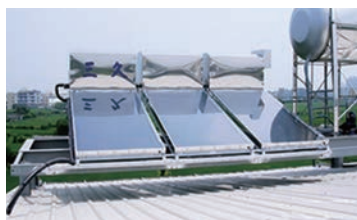
**Tempered Glass Specifically for Solar Water Heater Is Used, Making It Extremely Strong and Not Easy to Age. The Glass Is So Strong That It Can Stand The Weight of Six Adult Men.**



## Can Be Installed on Various Types of Roof



Standard



Tiling roof+construction rack



Terracotta



Parapet wall

## Examples of More Than 30 Years of Usage



Installed in 1981  
Miss Lin in Kaohsiung



Installed in 1988  
Mr. Chong in Taichung



Installed in 1988  
Mr. Chang in Changhua



Installed in 1989  
Mrs. Lai in Chiayi

## Examples of Large-scale Installation



200 units of NSK-45  
installed in Taoyuan City



120 units of NSK-45  
installed in Kaohsiung City



102 units of SP-125  
installed in Yunlin City



98 units of NSK-45  
installed in Kaohsiung City



72 units of NSK-45  
installed in Kaohsiung City



96 units of NSK-45  
installed in Kaohsiung City



72 units of TOP-256  
installed in Changhua City



30 units of NSK-45  
installed in Pingtung City

**SUNCUE**

Service Hotline  
**+886-800-69-3939**

**SUNCUE COMPANY LTD.**

No. 105, Renhua Rd., Dali Dist., Taichung City 412039, Taiwan, R.O.C.

+886-4-2339-7171

+886-4-2330-2939

www.suncue.tw

sales@suncue.com

www.facebook.com/suncue



SUNCUE  
website



facebook

Service Center

All rights reserved. No reproduction or republication without written permission.  
This catalog is for reference. Specification subject to change without notice.

SA250314-EN